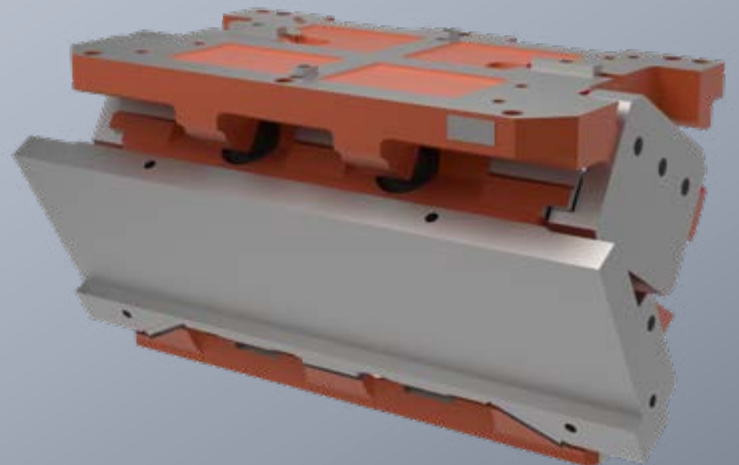
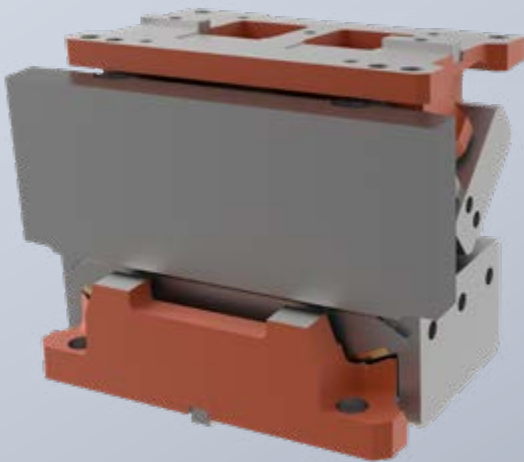
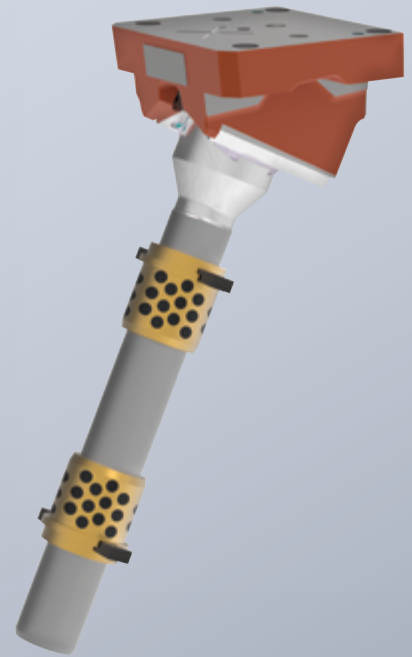
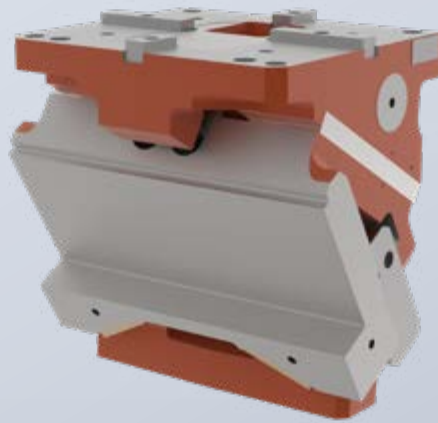







NEW PRODUCT INNOVATIONS 2023

CAM UNITS







OVERVIEW

SPECIFICATIONS

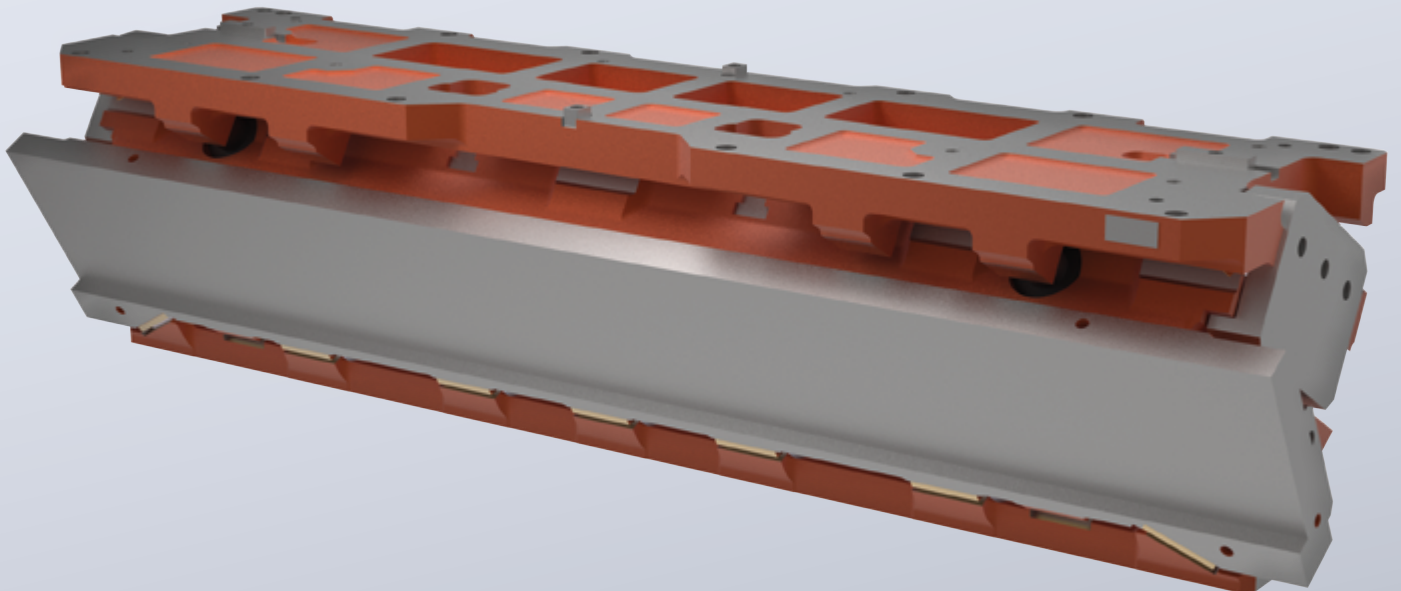
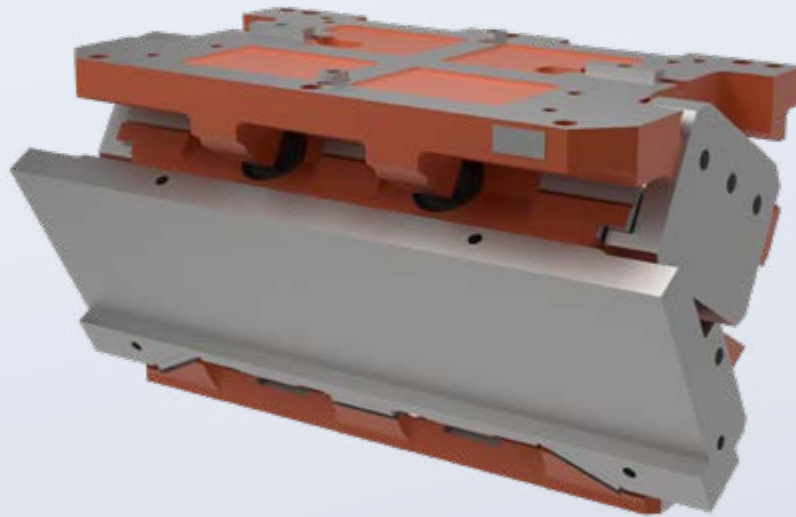
	Glide pairing	Features	guaranteed stroke rate / lifetime	Working angle	Gradation (Increment)	Width [mm]
2016.24. AERIAL CAM UNIT FCC High Volume						
	Sliding planes: Hardened steel / Bronze with solid lubricant	fully loaded; shouldered guide rails; Sliding guide version as double prism; Gas spring fulfils the BAK specifications	1.000.000	0°–75°	5°	60–1700
EXPANDED RANGE						
2016.25. AERIAL CAM UNIT FCC High Volume						
	Sliding planes: Hardened steel / Bronze with solid lubricant	fully loaded; shouldered guide rails; Sliding guide version as double prism; Gas spring fulfils the BAK specifications	1.000.000	0°–75°	5°	700–1050
2016.15. DIE MOUNTED CAM UNIT FCC High Volume						
	Sliding planes: Hardened steel / Bronze with solid lubricant	fully loaded; shouldered guide rails Sliding guide version as double prism; Gas spring fulfils the BAK specifications	1.000.000	0°–25°	5°	65–1700
EXPANDED RANGE						
2016.26. AERIAL CAM UNIT FCC Low Volume						
	Sliding planes: Cast/bronze with solid lubricant or sinter	partially loaded; shouldered guide rails; Gas spring	750.000	0°–75°	5°	65–400
2016.27. AERIAL CAM UNIT FCC Low Volume compact						
	Sliding planes: Cast/bronze with solid lubricant or sinter	partially loaded; shouldered guide rails; Gas spring	750.000	0°–75°	5°	65–400
EXPANDED RANGE						

OVERVIEW SPECIFICATIONS

	Glide pairing	Features	guaranteed stroke rate / lifetime	Working angle	Gradation (Increment)	Width [mm]
2016.11. DIE MOUNTED CAM UNIT FEAC Easy Application						
	Sliding planes: Cast / cast with solid lubricant	unloaded; Coil spring	300.000	0°	--	52–300
2016.14. DIE MOUNTED CAM UNIT FSAC Standard Application						
	Sliding planes: Hardened steel / Bronze with solid lubricant	partially loaded; Coil spring	600.000	0°	--	52–300
2017.43. ROLLER SLIDE UNITS FRC						
	Sliding planes: Hardened steel / Bronze with solid lubricant	fully loaded; Shouldered guide rails; Gas spring fulfils the BAK specifications	1.000.000	-20°–50°	variable	78–170
2019.21. PILLAR CAM FPC High Volume						
	Sliding planes: Hardened steel / bronze with solid lubricant or sintered material	fully loaded; shouldered guide rails; self-centring through prismatic guide; Anti-rotation element	1.000.000	50°–85°	5°	50–160

NEW SERIES

EXPANDED RANGE
2016.24.



AERIAL CAM UNIT FCC-HV

2016.24.

Aerial cam unit for high-volume applications with a 1,000,000 stroke/lifetime warranty
Expanded range: 12 new widths from 700–1700 mm

Design features:

- Double prism guide
- Sliding surfaces hardened steel / bronze with solid lubricant
- Gas springs with safety features
- The gas springs in the tool can be removed (without disassembling the cam slide unit)
- Positive locking connections
- Cam slide unit can be removed upwards and backwards in the tool*
- Structural damper**
- Compact installation space**
- High rigidity in the tool due too single driver**

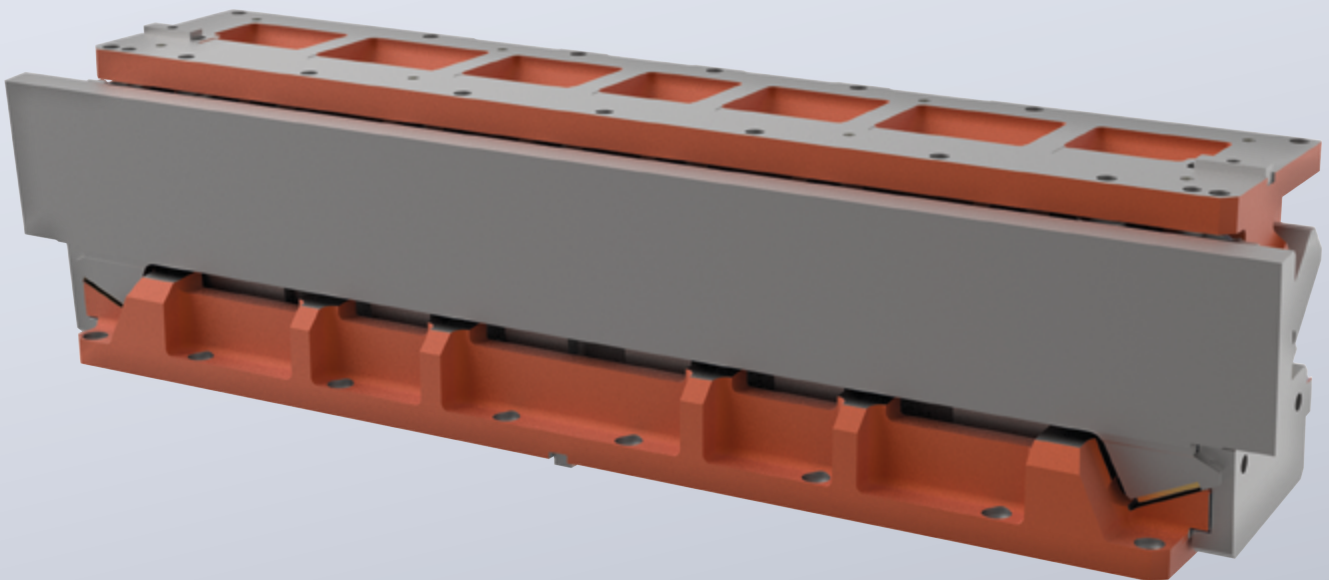
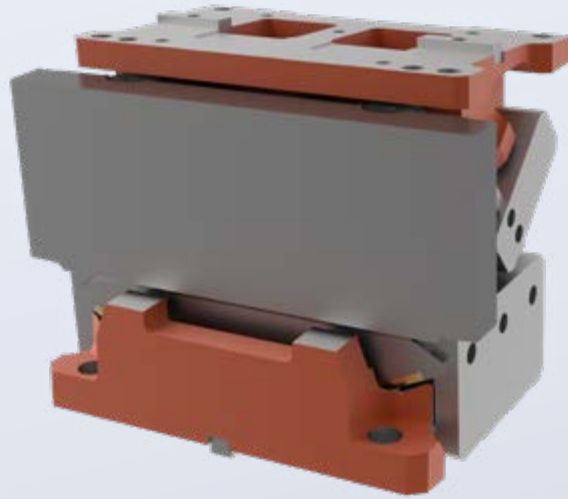
23 widths from 60 mm to 1700 mm, each in angle variants 0–75° in increments of 5°
From width 500 mm up to a working angle of 45° equipped with plate pre-acceleration
Further widths and angles, as well as customer-specific designs available on request

Order No	Width [mm]
2016.24.006. □□. 2000.00	60
2016.24.008. □□. 1000.00	85
2016.24.011. □□. 1000.00	110
2016.24.015. □□. 1000.00	150
2016.24.018. □□. 1000.00	180
2016.24.022. □□. 1000.00	220
2016.24.026. □□. 1000.00	260
2016.24.033. □□. 2000.00	330
2016.24.040. □□. 2000.00	400
2016.24.050. □□. 2000.00	500
2016.24.060. □□. 2000.00	600
2016.24.070. □□. □□00.00	700
2016.24.080. □□. □□00.00	800
2016.24.085. □□. □□00.00	850
2016.24.095. □□. □□00.00	950
2016.24.100. □□. □□00.00	1000
2016.24.110. □□. □□00.00	1100
2016.24.120. □□. □□00.00	1200
2016.24.130. □□. □□00.00	1300
2016.24.140. □□. □□00.00	1400
2016.24.150. □□. □□00.00	1500
2016.24.160. □□. □□00.00	1600
2016.24.170. □□. □□00.00	1700

* from width 150mm

** from width 700mm

EXPANDED RANGE
2016.15.



DIE MOUNTED CAM UNIT FCC-HV

2016.15.

Die mounted cam unit for high-volume applications with a 1,000,000 stroke/lifetime warranty
Expanded range: 16 new widths from 450–1700 mm

Design features:

- Double prism guide
- Sliding surfaces hardened steel / bronze with solid lubricant
- Gas springs with safety features
- The gas springs in the tool can be removed (without disassembling the cam slide unit)
- Positive locking connections
- Cam slide unit can be removed upwards and backwards in the tool
- Structural damper

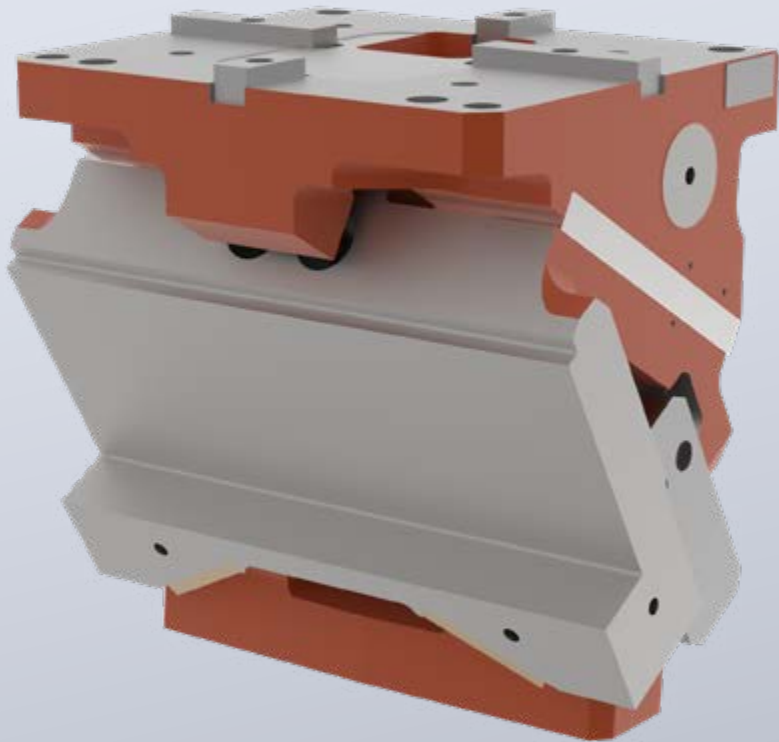
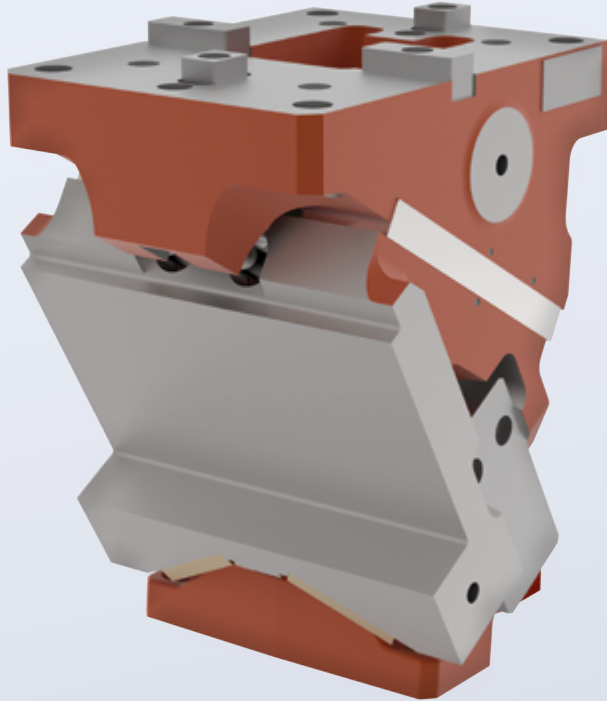
28 widths from 65mm to 1700 mm, each in angle variants 0–25° in increments of 5°

From a width of 185 mm equipped with plate pre-acceleration

Further widths and angles, as well as customer-specific designs available on request

Order No	Width [mm]
2016.15.006. □□. □00□.00	65
2016.15.008. □□. □00□.00	85
2016.15.009. □□. □00□.00	90
2016.15.011. □□. □00□.00	115
2016.15.012. □□. □00□.00	125
2016.15.016. □□. □00□.00	160
2016.15.018. □□. □00□.00	185
2016.15.022. □□. □00□.00	220
2016.15.026. □□. □00□.00	260
2016.15.031. □□. □00□.00	310
2016.15.034. □□. □00□.00	340
2016.15.040. □□. □00□.00	400
2016.15.045. □□. 1000.00	450
2016.15.051. □□. 1000.00	510
2016.15.058. □□. 1000.00	580
2016.15.065. □□. 1000.00	650
2016.15.070. □□. 1000.00	700
2016.15.080. □□. 1000.00	800
2016.15.085. □□. 1□00.00	850
2016.15.095. □□. 1□00.00	950
2016.15.100. □□. 1□00.00	1000
2016.15.110. □□. 1□00.00	1100
2016.15.120. □□. 1□00.00	1200
2016.15.130. □□. 1□00.00	1300
2016.15.140. □□. 1□00.00	1400
2016.15.150. □□. 1□00.00	1500
2016.15.160. □□. 1□00.00	1600
2016.15.170. □□. 1□00.00	1700

EXPANDED RANGE
2016.27.



AERIAL CAM UNIT FCC-LV

2016.27.

Compact top cam slide unit for low-volume applications with a 750,000 stroke/lifetime warranty
Expanded range: 6 new widths from 185–400mm

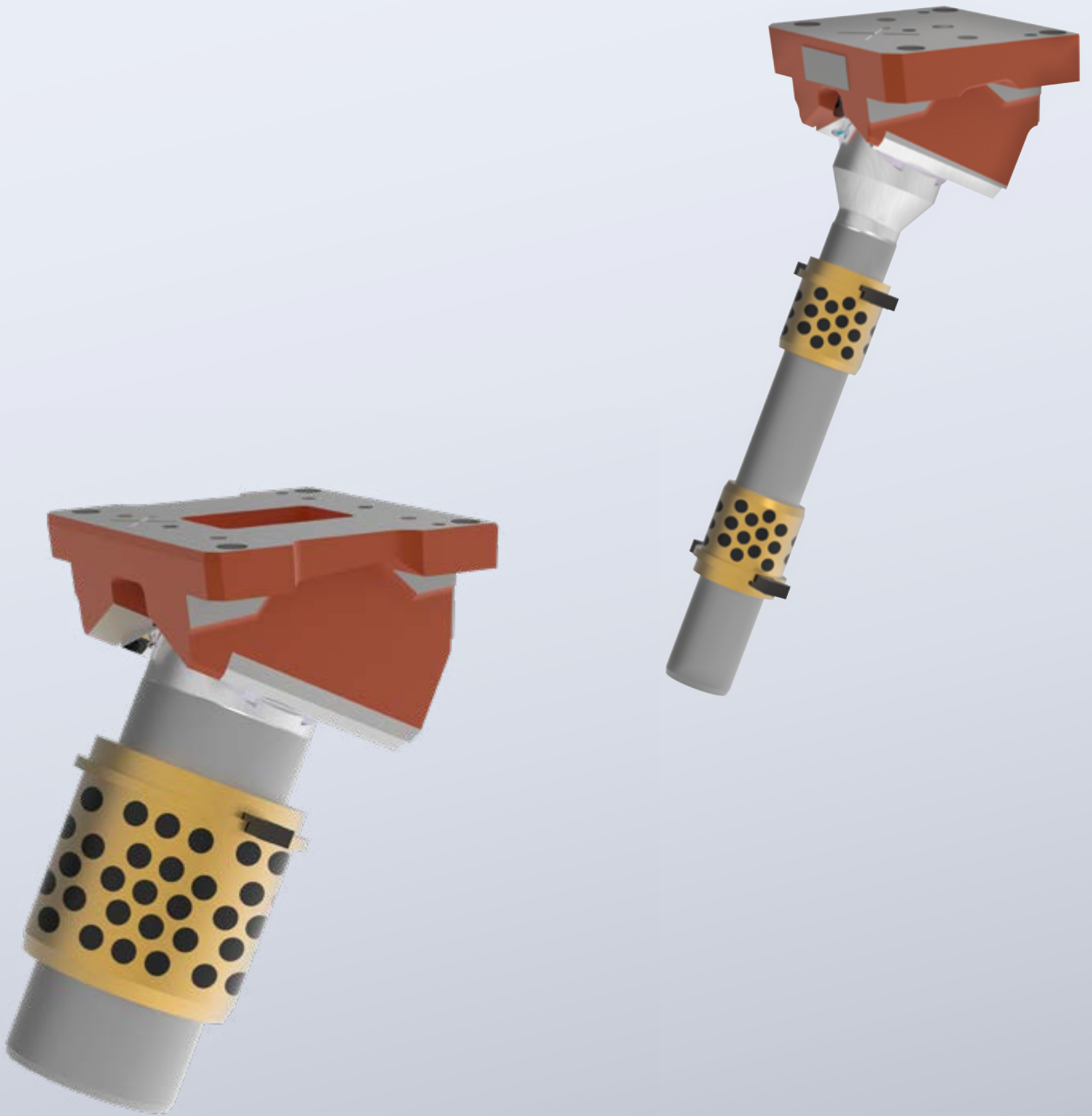
Design features:

- Prism guide against driver / box guide against base
- Cast sliding surfaces (unhardened) / bronze with solid lubricant or sinter
- Gas spring with safety features
- The gas spring can be removed within the tool (without disassembling the cam unit).
- Mechanical retraction
- Structural damper
- Cam unit in the tool can be removed towards the rear
- Extrem compact overall dimensions

12 widths from 65mm to 400mm, each in the angle variants 0–75° in increments of 5°
From a width of 185 mm equipped with plate pre-acceleration
Further widths and angles, as well as customer-specific designs available on request

Order No	Width [mm]
2016.27.006. □□. 2000.00	65
2016.27.008. □□. 2000.00	85
2016.27.009. □□. 2000.00	90
2016.27.011. □□. 2000.00	115
2016.27.012. □□. 2000.00	125
2016.27.016. □□. 2000.00	160
2016.27.018. □□. 2000.00	185
2016.27.022. □□. 2000.00	220
2016.27.026. □□. 2000.00	260
2016.27.031. □□. 2000.00	310
2016.27.034. □□. 2000.00	340
2016.27.040. □□. 2000.00	400

NEW SERIES
2019.21.



PILLAR CAM FPC-HV

2019.21.

Pillar cam for high-volume applications with a 1,000,000 stroke/lifetime warranty
Series innovation

Design features:

- Dovetail prismatic guide
- Sliding surfaces of hardened/sintered steel
- Positive locking connections
- Installation secured against torsion
- Compact installation space

6 widths from 50mm to 160mm, each in the angle variants 50–85° in increments of 5°
Pillar length to customer's specification

Further widths and angles, as well as customer-specific designs available on request

Order No	Width [mm]
2019.21.05□□.01.□□□□.0	50
2019.21.06□□.01.□□□□.0	63
2019.21.08□□.01.□□□□.0	80
2019.21.10□□.01.□□□□.0	100
2019.21.12□□.01.□□□□.0	125
2019.21.16□□.01.□□□□.0	160

FIBRO GMBH

Business Unit Standard Parts
August-Läpple-Weg
74855 Hassmersheim
GERMANY
T +49 6266 73-0
info@fibro.de
www.fibro.com

THE LÄPPLE GROUP

LÄPPLE AUTOMOTIVE
FIBRO
FIBRO LÄPPLE TECHNOLOGY
LÄPPLE AUS- UND WEITERBILDUNG